



# LOGICAL REASONING

SAMPLE BOOK



# LOGICAL REASONING



I'm the  
**Intelli Kid**

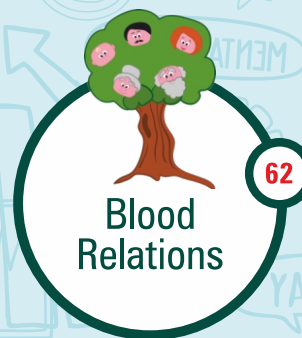
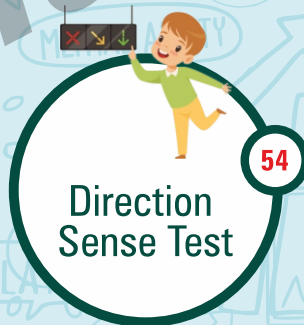
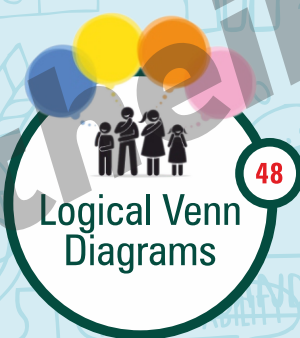
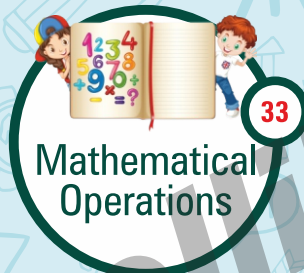
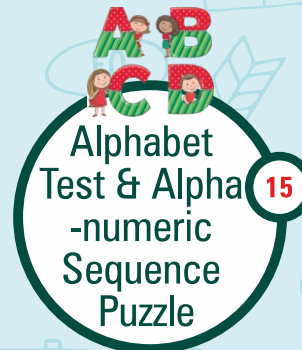
and  
I'm becoming the  
**Best Version**  
of myself with





# INDEX

GRADE-7





# I AM PROGRESSING

(Tick mark the columns after achieving the Learning Milestones)



TOPIC	1 <sup>st</sup> Learning	Exercise Solving	1 <sup>st</sup> Revision	2 <sup>nd</sup> Revision
 Verbal Series				
 Coding & Decoding				
 Alphabet Test & Alpha-numeric Sequence Puzzle				
 Verbal Analogy				
 Verbal Classification				
 Mathematical Operations				
 Inserting the Missing Character				
 Number, Ranking & Time Sequence Test				
 Logical Venn Diagrams				
 Direction Sense Test				
 Blood Relations				
 Sitting Arrangement				



# LOGICAL REASONING

SAMPLE THEORY

# CHAPTER 1

## VERBAL SERIES

### VERBAL SERIES

The word "series" is defined as anything that follows to form a specific pattern or in continuation of a given pattern or sequence.

To complete a series or identify a term, a student is required to identify the rule on which the given series has been formed. Let us illustrate to the readers with the help of examples with answers explained in detail.

Number Series

Alphabet Series

Alphanumeric Series

Continuous Pattern Series

### NUMBER SERIES

#### SOLVED EXAMPLES

**Example :** Find the missing number in the pattern below.



(1) 9

(2) 10

(3) 11

(4) 7

**Solution :**

Hence, the answer is (2).

**Example :** Choose the correct alternative which replaces the question mark.



(1) 51

(2) 91

(3) 42

(4) 81

**Solution :**

Therefore, the next number is 81.

Hence, the answer is (4).

**Example:** Choose the missing term to complete the given series.

1, 3, 10, 15, 28, 35, ?

(A) 40

(B) 42

(C) 44

(D) 46

**Solution:**

We observe that

Between 1 and 3  $+2 = 3$

Between 3 and 10  $+7 = 10$

Between 10 and 15  $+5 = 15$

Between 15 and 28  $+13 = 28$

Clearly, the pattern is:  $+2, +7, +5, +13, +2, +5, +13, +2$

So, the 6th required term  $= 35 + 2 = 37$

Hence, the answer is (B).

### ALPHABETIC SERIES

**Example:** Find the missing term.

(A) A

(B) B

(C) C

(D) D

We observe that, because the pattern is to count forward to come for both the first letter and

the second letter

Therefore

Second letter

A

B

C

D

E



Hence, the answer is (B).

### ALPHANUMERIC SERIES

**Example:** Find the missing term in the alpha numeric series.

21A, 40B, 60C, 77D, 90E, 100F, 110G

(A) 120H

(B) 130I

(C) 140J

(D) 150K

# LOGICAL REASONING

SAMPLE EXERCISE





# EXERCISE

## GRADE-7 Verbal Series



1. What comes next in the series given below ?

AZ, BY, CX, DW, ?

(1) EU

(2) VE

(3) UE

(4) EV

2. What comes next in the series given below ?

DE, HI, LM, PQ, ?

(1) QR

(2) RS

(3) ST

(4) TU

3. What comes next in the series given below ?

61, 53, 45, 37, 29, ?

(1) 23

(2) 21

(3) 19

(4) 16

4. What comes next in the series given below ?

2, 10, 20, 32, 46, ?

(1) 62

(2) 64

(3) 78

(4) 80

5. What comes next in the series given below ?

1, 8, 27, 64, 125, ?

(1) 150

(2) 216

(3) 228

(4) 236

6. Find out the next number in the given series.

2, 5, 9, 14, 20, ?

(1) 24

(2) 25

(3) 26

(4) 27

7. Find the next number in the given series.

(48, 12) (40, 10) (32, 8) (24, 6) ( ? )

(1) 14, 7

(2) 16, 8

(3) 16, 4

(4) 9, 6

8. Find out the next number in the given series.

1, 2, 4, 8, 16, ?

(1) 24

(2) 32

(3) 36

(4) 64

9. Find out the next number in the given series.

2, 3, 5, 7, 11, 13, ?

(1) 15

(2) 16

(3) 17

(4) 18

18. What is the next number in the series given below?

16, 5, 16, 6, 16, 6.5

(A) 7

(B) 6

(C) 7.5

(D) 6.5

19. Find out the next number in the given series.

6, 5, 5, 6, 6, 6.5

(A) 6

(B) 6.5

(C) 7

(D) 7.5

20. What comes next in the series given below?

6, 5, 6, 5, 6, 5.5

(A) 6

(B) 5.5

(C) 6.5

(D) 6.5

Directions: (Q. 21 to Q. 25) In each of the following letter series, some letters are missing, which are given in four order as one of the alternatives. Choose the correct option.

21. A \_ \_ \_ \_ \_

(A) A \_ \_ \_ \_

(B) A \_ \_ \_ \_

(C) A \_ \_ \_ \_

(D) A \_ \_ \_ \_

22. \_ \_ \_ \_ \_ A \_ \_

(A) \_ \_ \_ \_ \_

(B) \_ \_ \_ \_ \_

(C) \_ \_ \_ \_ \_

(D) \_ \_ \_ \_ \_

23. \_ \_ \_ \_ \_

(A) \_ \_ \_ \_ \_

(B) \_ \_ \_ \_ \_

(C) \_ \_ \_ \_ \_

(D) \_ \_ \_ \_ \_

24. \_ \_ \_ \_ \_ A \_ \_

(A) \_ \_ \_ \_ \_

(B) \_ \_ \_ \_ \_

(C) \_ \_ \_ \_ \_

(D) \_ \_ \_ \_ \_

25. \_ \_ \_ \_ \_

(A) \_ \_ \_ \_ \_

(B) \_ \_ \_ \_ \_

(C) \_ \_ \_ \_ \_

Directions: (Q. 26 to Q. 30) In each of the following questions, choose the missing term to complete the given series.

26. 16, 26, 36, 46, 56, 66

(A) 76

(B) 86

(C) 96

(D) 106

27. 6, 5, 6, 16, 26, 36, 46, 56

(A) 66

(B) 76

(C) 86

(D) 96

Directions: (Q. 31 to Q. 35) In each of the following questions, one term in the number series is wrong. Find out the wrong term.